

T70 Anti-Snap Cylinder



ASSA ABLOY

Technical details

The T70 cylinder has been specially designed to provide a guaranteed solution against SNAP attacks, while also providing efficient anti-extraction, anti-bump and anti-drill protection.

The (patented) head of the key presents a special configuration that makes it compatible with NARROW HEAD escutcheons.

The cylinder's security is also supported by a patent, ensuring that the key can not be duplicated.

Features

Basic

- » Type of key: Flat, non-duplicable and patented.
- » Number of rows: 1
- » Number of pins: 6+1 security sensor in the cylinder.
- » Combinatory: Degree 5
- » Resistance to corrosion and temperature: Degree B
- » Durability: 100,000 cycles

Anti-Tampering Protection

- » Double ANTI-SNAP protection:
 - via fuse slot
 - via reinforced steel bar
- » ANTIBUMP system
- » Anti-pick protection
- » Anti-drill protection: DEGREE 2
- » Anti-extraction protection: DEGREE 2

Narrow Head

- » Special configuration of the (patented) head of the key. Compatible with narrow-profile escutcheons.

Key protection

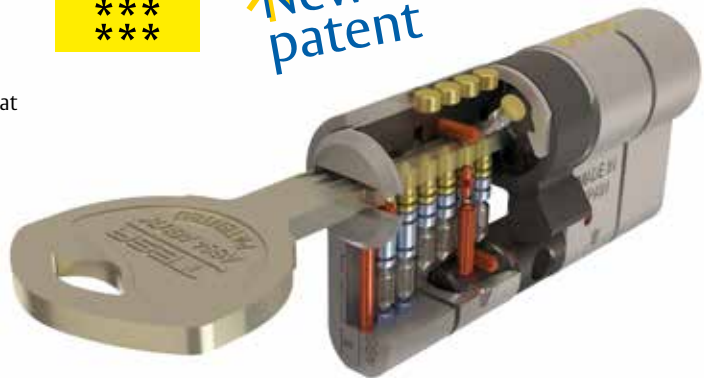
- » Patented key and cylinder.
- » Key duplication and cylinders are protected by property card.

Certification

- » Certificated according to EN1303

Options

- » Brass and nickel-chromed finishes
- » Cams: R15 and R13.
- » Optional: cylinders in KD and key alike. Not available in master keying.
- » Europrofile range, padlock and 682 and adjustable round shape.



Regulations

As well as the main models featured in TESA's catalogue, the T70 has been certified according to tests specified by European standards.

1	6	0	B	0	C	5	D
Resistance of the key (Degree 0-1)	Durability (Degree 4 to 6)	Door mass and locking force (Not applicable for cylinders)	Apt for use with firebreak doors (Degree 0-1)	Personal safety (Not applicable for cylinders)	High resistance to corrosion and temperature (Degrees 0, A, B, C)	Security of the key (Degree 1 to 6)	Anti-tampering resistance (Degree 0 to 2)

Recommendations

- » Use TESA lubrication for an optimum service life of the cylinder.
- » Always keep the ownership card in order to make copies of the keys.
- » Follow the mounting instructions supplied with the cylinder for the correct mounting of the product.

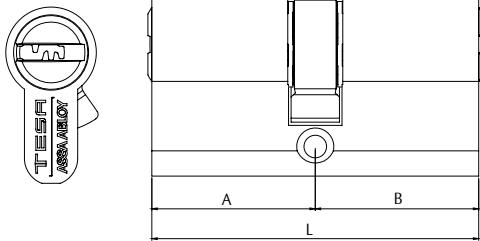


Security cylinder T70

European profile

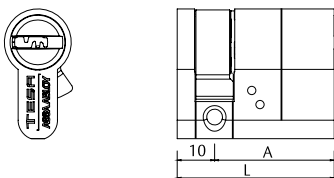
32 units (L≤90)
30 units (L>90)

T70 Double european



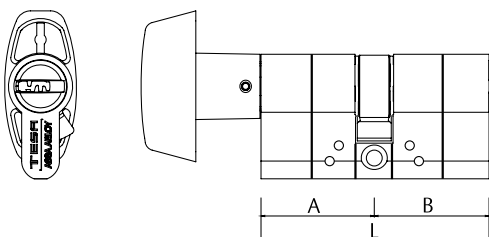
L	A	B	Cam = 15 mm	Finish	Short cam Cam = 13,2 mm	Finish
60	30	30	T7 55 30 30 L	Brass	M7 55 30 30 L	Brass
60	30	30	T7 55 30 30 N	Nickel	M7 55 30 30 N	Nickel
70	35	35	T7 55 35 35 L	Brass	M7 55 35 35 L	Brass
70	35	35	T7 55 35 35 N	Nickel	M7 55 35 35 N	Nickel
70	30	40	T7 55 30 40 L	Brass	M7 55 30 40 L	Brass
70	30	40	T7 55 30 40 N	Nickel	M7 55 30 40 N	Nickel
75	35	40	T7 55 35 40 L	Brass	M7 55 35 40 L	Brass
75	35	40	T7 55 35 40 N	Nickel	M7 55 35 40 N	Nickel
80	35	45	T7 55 35 45 L	Brass	M7 55 35 45 L	Brass
80	35	45	T7 55 35 45 N	Nickel	M7 55 35 45 N	Nickel
80	30	50	T7 55 30 50 L	Brass	M7 55 30 50 L	Brass
80	30	50	T7 55 30 50 N	Nickel	M7 55 30 50 N	Nickel
80	40	40	T7 55 40 40 L	Brass	M7 55 40 40 L	Brass
80	40	40	T7 55 40 40 N	Nickel	M7 55 40 40 N	Nickel
85	35	50	T7 55 35 50 L	Brass	M7 55 35 50 L	Brass
85	35	50	T7 55 35 50 N	Nickel	M7 55 35 50 N	Nickel
85	40	45	T7 55 40 45 L	Brass	M7 55 40 45 L	Brass
85	40	45	T7 55 40 45 N	Nickel	M7 55 40 45 N	Nickel
90	35	55	T7 55 35 55 L	Brass	M7 55 35 55 L	Brass
90	35	55	T7 55 35 55 N	Nickel	M7 55 35 55 N	Nickel
90	40	50	T7 55 40 50 L	Brass	M7 55 40 50 L	Brass
90	40	50	T7 55 40 50 N	Nickel	M7 55 40 50 N	Nickel
90	45	45	T7 55 45 45 L	Brass	M7 55 45 45 L	Brass
90	45	45	T7 55 45 45 N	Nickel	M7 55 45 45 N	Nickel
95	40	55	T7 55 40 55 L	Brass	M7 55 40 55 L	Brass
95	40	55	T7 55 40 55 N	Nickel	M7 55 40 55 N	Nickel
95	45	50	T7 55 45 50 L	Brass	M7 55 45 50 L	Brass
95	45	50	T7 55 45 50 N	Nickel	M7 55 45 50 N	Nickel
100	40	60	T7 55 40 60 L	Brass	M7 55 40 60 L	Brass
100	40	60	T7 55 40 60 N	Nickel	M7 55 40 60 N	Nickel
100	45	55	T7 55 45 55 L	Brass	M7 55 45 55 L	Brass
100	45	55	T7 55 45 55 N	Nickel	M7 55 45 55 N	Nickel
100	50	50	T7 55 50 50 L	Brass	M7 55 50 50 L	Brass
100	50	50	T7 55 50 50 N	Nickel	M7 55 50 50 N	Nickel

T70 Single european



L	A	B	Exc. = 15 mm	Finish	Short cam Cam = 13,2 mm	Finish
60	30	30	T7 5B 30 30 L	Brass	M7 5B 30 30 L	Brass
60	30	30	T7 5B 30 30 N	Nickel	M7 5B 30 30 N	Nickel
70	35	35	T7 5B 35 35 L	Brass	M7 5B 35 35 L	Brass
70	35	35	T7 5B 35 35 N	Nickel	M7 5B 35 35 N	Nickel
80	40	40	T7 5B 40 40 L	Brass	M7 5B 40 40 L	Brass
80	40	40	T7 5B 40 40 N	Nickel	M7 5B 40 40 N	Nickel
90	40	50	T7 5B 40 50 L	Brass	M7 5B 40 50 L	Brass
90	40	50	T7 5B 40 50 N	Nickel	M7 5B 40 50 N	Nickel

T70 Knob european




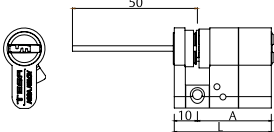
L	A	B	Exc. = 15 mm	Finish	Short cam Cam = 13,2 mm	Finish
40	30	10	T7 55 30 10 L	Brass	M7 55 30 10 L	Brass
40	30	10	T7 55 30 10 N	Nickel	M7 55 30 10 N	Nickel
45	35	10	T7 55 35 10 L	Brass	M7 55 35 10 L	Brass
45	35	10	T7 55 35 10 N	Nickel	M7 55 35 10 N	Nickel
50	40	10	T7 55 40 10 L	Brass	M7 55 40 10 L	Brass
50	40	10	T7 55 40 10 N	Nickel	M7 55 40 10 N	Nickel
55	45	10	T7 55 45 10 L	Brass	M7 55 45 10 L	Brass
55	45	10	T7 55 45 10 N	Nickel	M7 55 45 10 N	Nickel
60	50	10	T7 55 50 10 L	Brass	M7 55 50 10 L	Brass
60	50	10	T7 55 50 10 N	Nickel	M7 55 50 10 N	Nickel

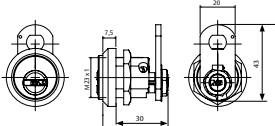
* To process "master keyed" and "cylinders alike" orders add either AM or KA in each part number, respectively.

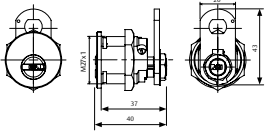
Security cylinder T70

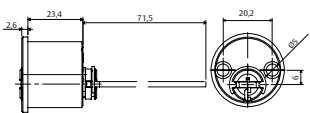
European profile

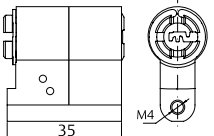
 24 units (L<100)

Adjustable european cylinder		L	A	B	Exc. = 15 mm	Finish	Short cam Cam = 13,2 mm	Finish
	40	30	10	T7 5R 30 10 L	Brass	M7 5R 30 10 L	Brass	
	40	30	10	T7 5R 30 10 N	Nickel	M7 5R 30 10 N	Nickel	
	50	40	10	T7 5R 40 10 L	Brass	M7 5R 40 10 L	Brass	
	50	40	10	T7 5R 40 10 N	Nickel	M7 5R 40 10 N	Nickel	

T70 Profile type 682 M23 electric and mechanical		L	A	B	Exc. = 15 mm	Finish	Short cam Cam = 13,2 mm	Finish
	ELEC	23	1+RET	682M23T7CR	Nickel	682M23M7CR	Nickel	
	MEC	23	NA	682M23T7NM	Nickel	682M23M7NM	Nickel	

T70 Profile type 682 M27 electric and mechanical		L	A	B	Exc. = 15 mm	Finish	Short cam Cam = 13,2 mm	Finish
	ELEC	27	1	682T71C	Nickel	682M71C	Nickel	
	ELEC	27	2	682T72C	Nickel	682M72C	Nickel	
	ELEC	27	1+RET	682T7CR	Nickel	682M7CR	Nickel	
	MEC	27	NA	682T7NM	Nickel	682M7NM	Nickel	

T70 Adjustable round cylinder		L	A	B	Exc. = 15 mm	Finish	Short cam Cam = 13,2 mm	Finish
	28			55 T7 03 LN	Nickel	55 M7 03 LN	Nickel	
	28			55 T7 03 LT	Brass	55 M7 03 LT	Brass	
	28			55 T7 05 LN	Nickel	55 M7 05 LN	Nickel	
	28			55 T7 05 LT	Brass	55 M7 05 LT	Brass	

T70 Padlock exchangeable		L	A	B	Exc. = 15 mm	Finish	Short cam Cam = 13,2 mm	Finish
	35	35		T75CL55 L	Brass	M7 5CL55L	Brass	
	35	35		T75CL55 N	Nickel	M7 5CL55N	Nickel	

* If you wish to order copies of the same key or masterkeying, just add KA or AM at the end of each reference.

D