

# Security escutcheons for mortise locks

## E800

Security  
\*\*\*\*  
\*\*\*\*\*

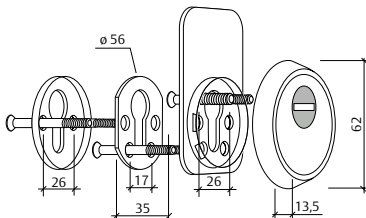
- » Both the internal and the external parts in the E900 weather proof escutcheon have received special platings.
- » The final result is a product that easily exceeds 500 hours under a salt spray with corrosion power as specified in the pan-European standard EN1670. This means doubling the highest level in the pan-European EN1670 standard (grade 4: 240 h.)
- » Plug covering lid has been given a 19 µm nickel plating and an additional µm of chrome plating
- » The brass outer shell in the escutcheon nucleus and the revolving brass ring has received a 19 µm nickel plating, one µm of gold plating and, a 15 µm LEC treatment and, finally, more than 80 µm of epoxy varnish.



## E700

Security  
\*\*\*\*  
\*\*\*

- » Escutcheon nucleus: Four stamped steel plates (2mm. each plate).
- » Plug covering lid in hardened steel.
- » Tempered steel plate for lock mechanism protection.
- » Six hardened steel screws for escutcheon fixing.
- » Laminated steel back fixing plate has 4mm. width.
- » The E700X special model will be required for use in combination with STS security cylinders: IX and CS systems.
- » Finishes: Satin brass and nickel plated brass.



## E750

Security  
\*\*\*\*  
\*\*\*\*

- » Geometry of the holder developed to hamper clamps, extractors, spanners.
- » Polyamide based component, to protect screws and to absorb impacts.
- » Finishes: Stainless Steel, LMD.

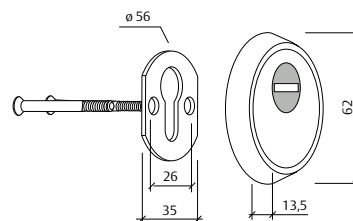


NEW

## E700L

Security  
\*\*\*  
\*\*

- » Escutcheon nucleus: Two stamped steel plates (2mm. each plate).
- » Plug covering lid in hardened steel.
- » Two hardened steel screws for escutcheon fixing.
- » Laminated steel back fixing plate has 4mm. width.
- » Finishes: Satin brass and nickel plated brass.



# Security escutcheons for mortise locks

## E300L

- » Anti-extraction solid brass exterior escutcheon.
- » Two hardened steel screws for escutcheon fixing.
- » Laminated steel back fixing plate has 4mm. width.
- » Finishes: Satin brass and nickel plated brass.
- » Easy installation.

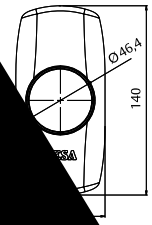
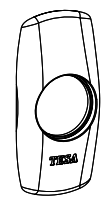
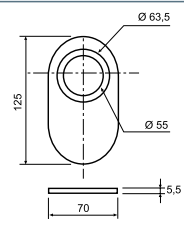
Security  
\*\*\*



## Escutcheons

Product code	Finish
E300L26	LM / CM
E300L27	LM / LN / CM
E300L28	AI

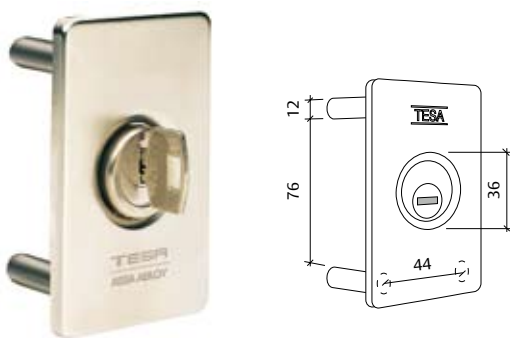
Model	Product code	Finish
Key protector	EMB700	AE
Key protector	EMB700	NM / ZN / CM
Key protector	EMB855	AE
Key protector	EMB855	NE
Key protector	EMB855	LPD
Key protector	EMB855	NS
Key protector	EMB855	CM



# Security escutcheons for rim locks

## ESTS

- » Exterior protective escutcheon possesses a 4mm. thick tempered steel plate.
- » Four fixing rods in hardened steel.
- » Cylinder cover in nickel plated steel.
- » Plug covering lid in 3mm. thick nickel plated steel.
- » Exterior brass cover can be either satin brass or nickel plated finished.



## EMB700

- » A practical complement that improves aesthetic appearance and prevents the door from being scratched with the key movements.
- » Compatible with any TESA security escutcheon for mortise locks.



## EMB855

- » Handy complement for the E-800 protection strike, with the E700 being liable to be adapted as well.
- » Protection strike with 6 mm. thick tempered steel plate and block anchoring crossing both the door and the lock. Guarantees huge resistance to attacks.
- » Bolts or fixing rapiers in improved steel.
- » Fixing is done with two improved M6 screws.
- » Cover or embellishing strike that covers the plate and enhances the aesthetics of the whole.



Model	Product code	Finish
E300L	E300L26	LM / CM
E700L	E700L26	LM / LN / CM
E750 outdoor	E75026	AI
E750 outdoor	E75026	PVD
E800 outdoor	E80026	PVD
E800 outdoor	E80026	AI
Key protector	EMB700	AE
Key protector	EMB700	NM/ZN/CM
Key protector	EMB855	AE
Key protector	EMB855	NE
Key protector	EMB855	LPD
Key protector	EMB855	NS
Key protector	EMB855	CM

