

Link arm door closers

CT3000

CT3000 closers offer the most refined size and speed adjustment capability, an outstanding power adjustment scope and impressive hydraulic control for heavy doors up to 160 kg. These and other characteristics make it be the professional's choice for any heavy duty door subjected to high traffic volumes, wind draughts or even abuse.

» EN1154 certified: EN1154:1996+A1:2002

CT300036 with link arm: 4 8 2/6 1 1 4

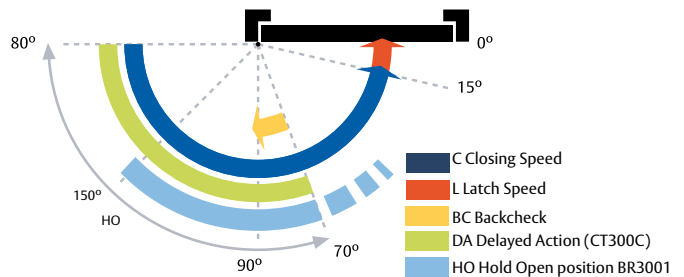
CT300036 with guide rail: 4 8 1/4 1 1 4

- » Continuously adjustable size from EN2 to EN6.
- » CT300036 combined with guide rails is size adjustable from EN1 to EN4.
- » Backcheck valve to protect the door against violent openings.
- » CT300C36 includes Delayed Action valve.
- » BR3001: Adjustable hold open arm.
- » Internal Safety Valves protect the closer mechanism and door environment from rough or abusive use thanks to, their pressure relief action.
- » Outstanding thermal behaviour. Working temperature: -35°C to 50°C

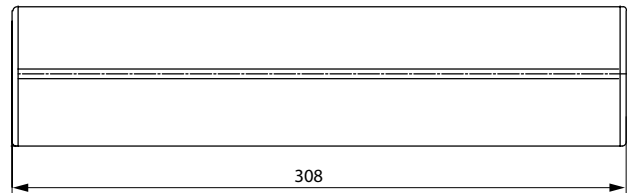
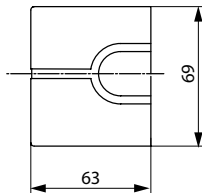


EN 1154 CERTIFIED

Fire door



Extendable height spindle 14 mm.



CT300036 - CT300C36				
Size	B.C (Back check)	D.A (Delayed action)	Model	Finish
2-6	Yes	-	CT300036BL	White
2-6	Yes	-	CT300036NE	Black
2-6	Yes	-	CT300036OR	Gold
2-6	Yes	-	CT300036PL	Silver
2-6	Yes	-	CT300036IM	Stainless steel
2-6	Yes	Yes	CT300C36BL	White
2-6	Yes	Yes	CT300C36NE	Black
2-6	Yes	Yes	CT300C36OR	Gold
2-6	Yes	Yes	CT300C36PL	Silver
2-6	Yes	Yes	CT300C36IM	Stainless steel

Size (EN 1154)	Door width cm	Door weight Kg
2	85	40
3	95	60
4	110	80
5	125	100
6	140	120
7	160	160

CT3000: Stable under any circumstance

Closing time versus temperature

