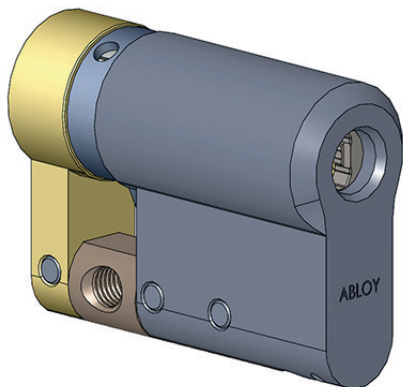


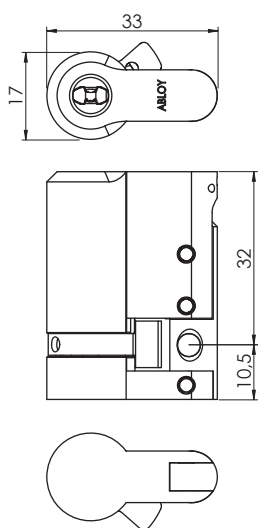
## ABLOY® CY351 DIN single cylinder



**Product description**  
Strong hardened steel cylinder.

### Overview of Advantages

- Can be used with wide range applications for DIN cylinders
- Heavy duty drill protection
- Suitable for both outer and inner door use
- Adjustable length with extension system to match different door thicknesses
- Adjustable locked position of cam
- Several plating options



### Technical data

Available key systems	ABLOY PROTEC <sup>2</sup>
Available plating options	Bright chrome (Cr), Satin chrome (HCr), Brushed nickel (NiHa)
Cylinder length	32mm
Length adjustable	with 5mm steps 32–82mm, and with 10mm steps 82–132mm
Weight	0,2kg

This content is protected by Intellectual Property Rights Laws. The title to the content shall not pass to you, and instead shall remain with Abloy Oy or a third party holding the title. Abloy develops continuously the products and solutions offered. Therefore, the information contained in the document is subject to change without notice. ABLOY PROVIDES THIS CONTENT ON AN "AS IS" BASIS WITHOUT ANY WARRANTIES OF ANY KIND, EXPRESS, IMPLIED, OR STATUTORY."