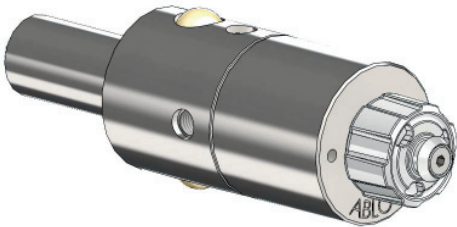


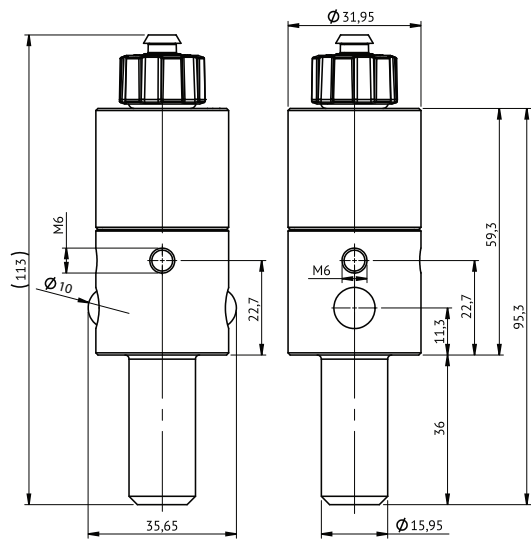
ABLOY® CLLW777

Electromechanical CLIQ camlock



Product description
Electromechanical CLIQ camlock is used as retrofit cylinder in dormakaba Thorlock body.

- Overview of Advantages**
- Durable construction for harsh environment
 - Corrosion resistant
 - Weather seal cap for keyhole



Technical data	
Available key systems	ABLOY PROTEC ² CLIQ
Body material	Stainless steel
Weight	0,4 kg

- Cylinder memory**
- 1800 authorized key groups and programming keys together, theoretical maximum 65535 keys in each group
 - A list of 3000 denied keys
 - Audit trail of last 2000 events
 - Audit trail of last 20 events from keys in other systems

This content is protected by Intellectual Property Rights Laws. The title to the content shall not pass to you, and instead shall remain with Abloy Oy or a third party holding the title. Abloy develops continuously the products and solutions offered. Therefore, the information contained in the document is subject to change without notice. ABLOY PROVIDES THIS CONTENT ON AN "AS IS" BASIS WITHOUT ANY WARRANTIES OF ANY KIND, EXPRESS, IMPLIED, OR STATUTORY."