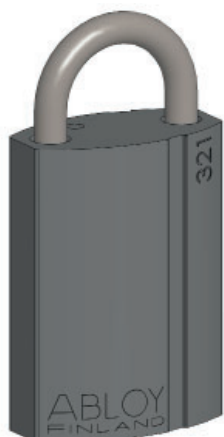




ABLOY® PLL321 Electromechanical CLIQ Padlock



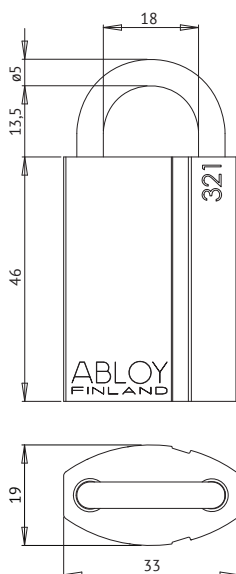
Product description

Light brass padlock.

Lock is operated with an electronic CLIQ key from outside. Key can be removed only in locked position.

Overview of Advantages

- Durable construction even in harsh environment
- Corrosion resistant
- Suitable for cash boxes, tool boxes, storage cabins, light machinery, lockers, etc.



Technical data

Available key systems	PROTEC CLIQ, PROTEC ² CLIQ
Body	Made of brass, bright chromium (Cr) plated
Body size	33 x 19 x 46 mm (width x thickness x height)
Shackle	Diameter 5 mm, heights 13,5 mm, 25 mm and 50 mm, material stainless steel
Weight	0,20kg

Cylinder memory

- 1800 authorized key groups and programming keys together, theoretical maximum 65535 keys in each group
- A list of 3000 denied keys
- Audit trail of last 2000 events
- Audit trail of last 20 events from keys in other systems

This content is protected by Intellectual Property Rights Laws. The title to the content shall not pass to you, and instead shall remain with Abloy Oy or a third party holding the title. Abloy develops continuously the products and solutions offered. Therefore, the information contained in the document is subject to change without notice. ABLOY PROVIDES THIS CONTENT ON AN "AS IS" BASIS WITHOUT ANY WARRANTIES OF ANY KIND, EXPRESS, IMPLIED, OR STATUTORY."