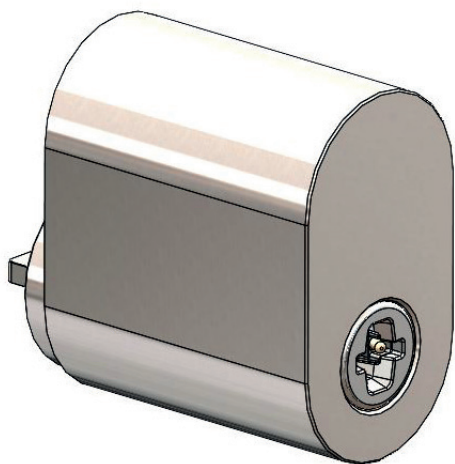


ABLOY® CYE200

Electromechanical PULSE Scandinavian oval cylinder hardened

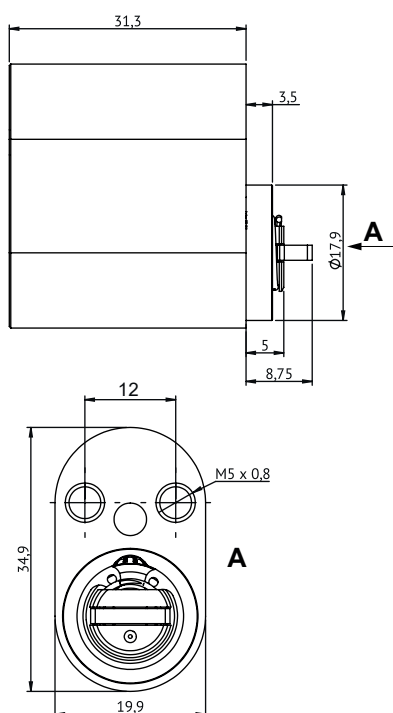


Product description

Electromechanical PULSE cylinder. Can be used wide range of Scandinavian type mortice lock cases where approval is needed.

Overview of Advantages

- Cylinders with standard dimensions entail easy upgrade, fast, and flexible modernization of your locking system.
- Suitable for both outer and inner door use.
- Adjustable length with extension system to match different door thicknesses.
- Designed and tested to withstand difficult climate conditions.



Technical data

Available key systems	PULSE
Available plating options	Bright chrome (Cr) Satin Chrome (HCr) Stainless look (CrHa) Nickel (Ni)
Length adjustable	with 10mm steps
Suitable for fire doors	Yes
Certificates	EN15684:2012 - 16B4AF22 SSF3522 class 3
Weight	0,16kg
IP Rating	IP55
Cylinder memory	Authorized access groups 70 Blocklist 100 keys Audit trail of last 500 events (Data collection can be prevented)

This content is protected by Intellectual Property Rights Laws. The title to the content shall not pass to you, and instead shall remain with Abloy Oy or a third party holding the title. Abloy develops continuously the products and solutions offered. Therefore, the information contained in the document is subject to change without notice. ABLOY PROVIDES THIS CONTENT ON AN "AS IS" BASIS WITHOUT ANY WARRANTIES OF ANY KIND, EXPRESS, IMPLIED, OR STATUTORY."