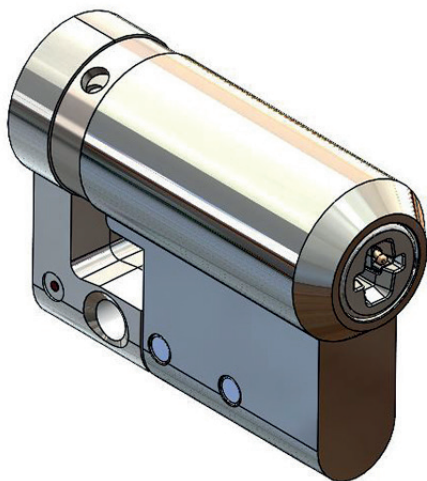


ABLOY® CYE331

Electromechanical PULSE DIN/Europrofile hardened half cylinder

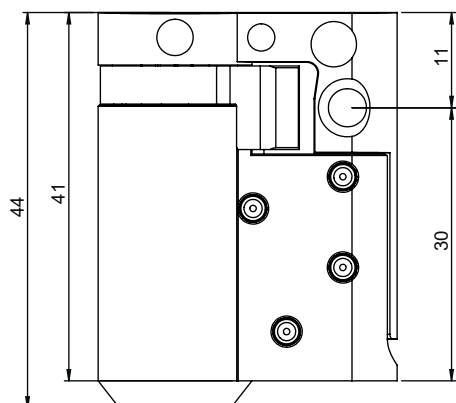
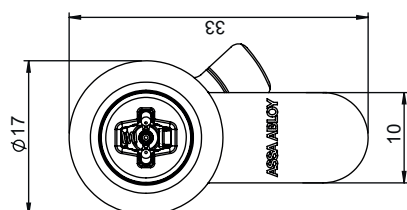


Product description

Electromechanical PULSE cylinder. Used with mortice lock cases with DIN / Europrofile cylinder dimensions.

Overview of Advantages

- Can be use with wide range applications for DIN cylinders
- Suitable for both outer and inner door use
- Adjustable length with extension system to match different door thicknesses
- Adjustable locked position of cam



Technical data

Available key systems	PULSE
Available plating options	Bright chrome (Cr)
Cylinder cross section according standard DIN 18252	
Cylinder length	30mm
Length adjustable (outside & Inside)	With 5mm steps to max. 120mm
Suitable for fire doors	Yes
Certificates	EN15684:2012 - 16B4AF22 SKG*** A2P
Weight	0,15kg
Cylinder memory	Authorized access groups 70 Blocklist 100 keys Audit trail of last 500 events (Data collection can be prevented)

This content is protected by Intellectual Property Rights Laws. The title to the content shall not pass to you, and instead shall remain with Abloy Oy or a third party holding the title. Abloy develops continuously the products and solutions offered. Therefore, the information contained in the document is subject to change without notice. ABLOY PROVIDES THIS CONTENT ON AN "AS IS" BASIS WITHOUT ANY WARRANTIES OF ANY KIND, EXPRESS, IMPLIED, OR STATUTORY."