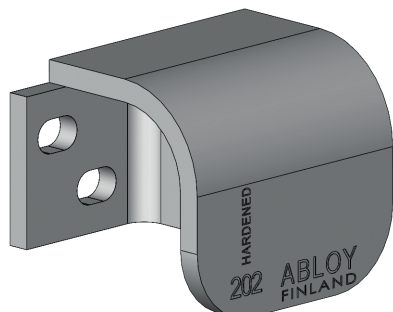
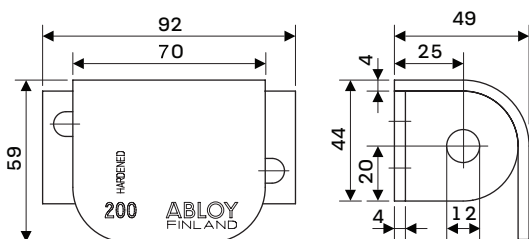


ABLOY® PL200 / PL202 Staple for padlock



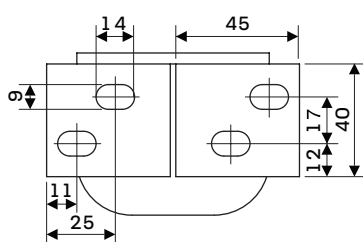
Product description
 PL200 for right-handed doors
 PL202 for left-handed doors

Fixing screws included



Technical data

Material	Case-hardened steel
Available plating options	Zinc-plated, polyester-coated
Security grading	EN12320 grade 3, FA grade 1
Weight	0,77 kg



This content is protected by Intellectual Property Rights Laws. The title to the content shall not pass to you, and instead shall remain with Abloy Oy or a third party holding the title. Abloy develops continuously the products and solutions offered. Therefore, the information contained in the document is subject to change without notice. ABLOY PROVIDES THIS CONTENT ON AN "AS IS" BASIS WITHOUT ANY WARRANTIES OF ANY KIND, EXPRESS, IMPLIED, OR STATUTORY."