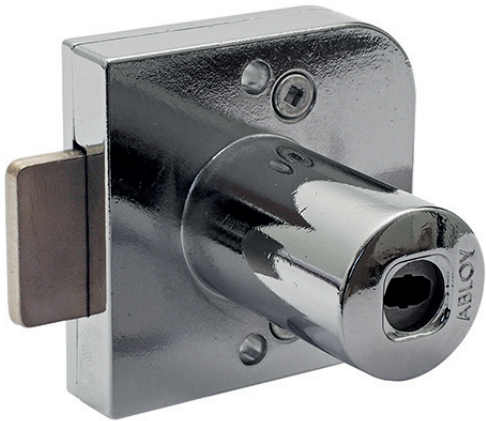




# ABLOY® OFL240T

## Electromechanical CLIQ T-Cabinet lock

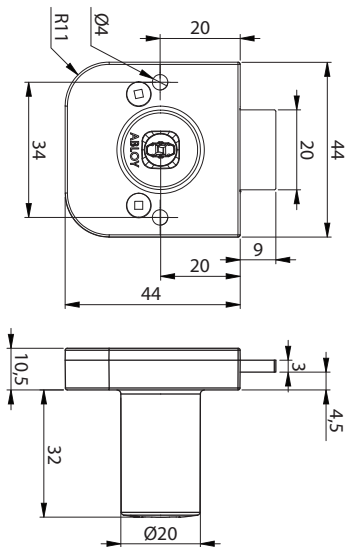


**Product description**

Double-secured locking and access control. PROTEC<sup>2</sup> CLIQ cabinet lock for office furnitures.

**Overview of Advantages**

- Flat steel bolt provides maximum resistance against attack by pulling
- Used in furniture swing doors and drawers
- Flat steel bolt



**Technical data**

Available key systems	ABLOY PROTEC <sup>2</sup> CLIQ
Body material	Zinc
Available plating options	Bright chrome (Cr)
Bolt type	Straight
Bolt material	Nickel plated steel
Key removal	Locked position
Locking	With key
Weight	0,11 kg
Maximum door thicknesses	25 mm

**Cylinder memory**

- 1800 authorized key groups and programming keys together, theoretical maximum 65535 keys in each group
- A list of 3000 denied keys
- Audit trail of last 2000 events
- Audit trail of last 20 events from keys in other systems