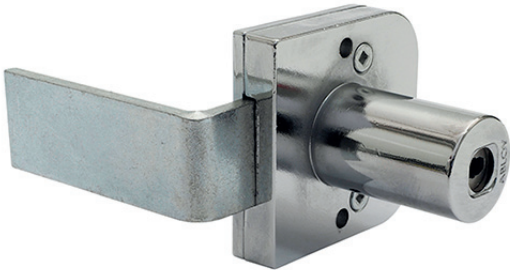


ABLOY® OFL244T
Electromechanical CLIQ™-Cabinet lock

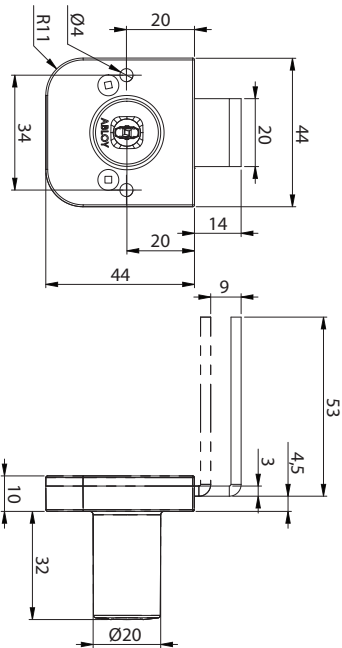


Product description

Double-secured locking and access control. PROTEC² CLIQ cabinet lock for office furnitures.

Overview of Advantages

- Used in furniture drawers
- Steel bol



Technical data

| | |
|---------------------------|---------------------|
| Available key systems | ABLOY PROTEC² CLIQ |
| Body material | Zinc |
| Available plating options | Bright chrome (Cr) |
| Bolt type | Joint closure |
| Bolt material | Nickel-plated steel |
| Key removal | Locked position |
| Locking | With key |
| Weight | 0,13 kg |
| Maximun door thicknesses | 8 mm |

Cylinder memory

- 1800 authorized key groups and programming keys together, theoretical maximum 65535 keys in each group
- A list of 3000 denied keys
- Audit trail of last 2000 events
- Audit trail of last 20 events from keys in other systems