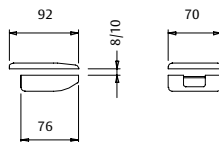


Glass door accesories

Strikes

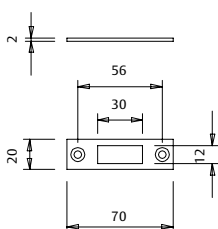
CEVIS

- » Strike for glass mounting.
- » Stainless steel finish, AISI 304.
- » Reversible.



CEVPIS

- » Strike for wall mounting.
- » Stainless steel finish, AISI 304.

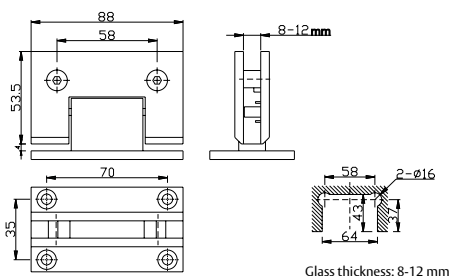


Model	Mounting	Glass thickness	Finish
CEVIS	Glass	8 - 10 mm	Stainless steel
CEVPIS	Wall	-	Stainless steel

Hinges

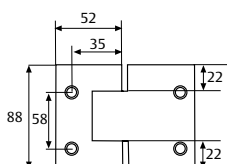
BISVP180IS

- » Glass to wall hinge.
- » Stainless steel finish, AISI 304.



BISVV180IS

- » Glass to glass hinge.
- » Stainless steel finish, AISI 304.



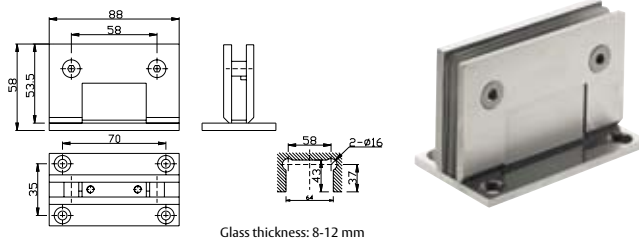
Model	Mounting	Turn	Glass thickness	Finish
BISVP180IS	Wall - glass	180°	8 - 10 mm	Stainless steel
BISVV180IS	Glass - glass	180°	8 - 10 mm	Stainless steel

Glass door accessories

Fittings

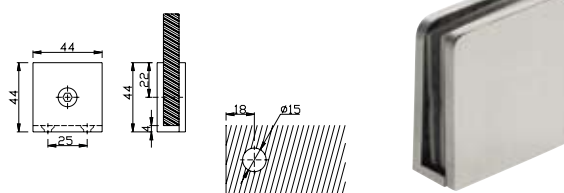
FIJAVPCPIS

- » Glass to wall fixing brackets.
- » Stainless steel finish, AISI 304.



FIJAVPSPIS

- » Glass to wall fixing brackets.
- » Stainless steel finish, AISI 304.



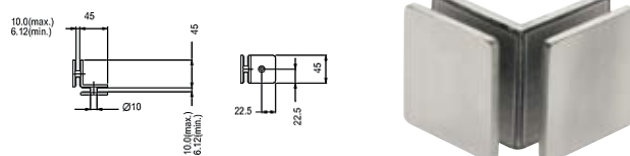
FIJAVV180IS

- » Glass to glass fixing brackets.
- » 180° angle.
- » Stainless steel finish, AISI 304.



FIJAVV90IS

- » Glass to glass fixing brackets.
- » 90° angle.
- » Stainless steel finish, AISI 304.



RV3T

- » Glass to glass fixing brackets.
- » Stainless steel finish, AISI 304.



Model	Mounting	Angle	Glass thickness	Finish
FIJAVPCPIS	Wall - glass	-	8 - 10 mm	Stainless steel
FIJAVPSPIS	Wall - glass	-	8 - 10 mm	Stainless steel
FIJAVV180IS	Glass - glass	180°	8 - 10 mm	Stainless steel
FIJAVV90IS	Glass - glass	90°	8 - 10 mm	Stainless steel
RV3T	Glass - glass	-	8 - 10 mm	Stainless steel

