

Multipoint lock

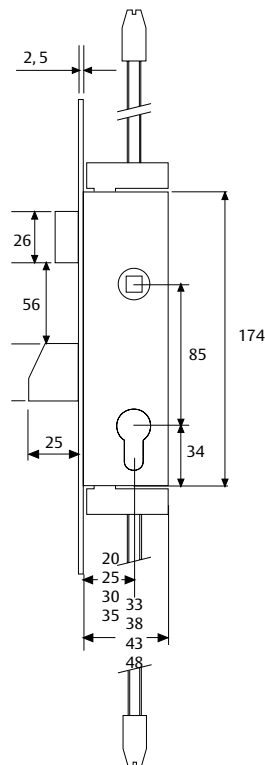
Swinging bolt + top jamb + floor locking points

NEW
Adjustable latchbolt
as standard

2230 Series

- » Adjustable latchbolt as standard.
- » Face plate and strike plates made in stainless steel.
- » Bolt throw is 25mm. and top-jamb&floor throw is 15mm.
- » Two threaded connecting rods for top-jamb and floor locking by means of M8 threaded bars. The M8 threaded bars are not supplied.
- » Top jamb and floor locking zones can be reinforced with hardened steel locking bolts that have an inner thread to match the M8 bars: PAB2230.

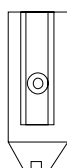
Options				
Backsets	20	25	30	35
Cylinder cam	15 mm			
Latch	Standard			
Accessories				
Escutcheons	E190	E205	E210	E240
Strikes	C22	T21	Electric	Adjustable



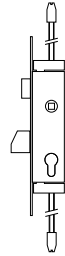
Recommended accessories




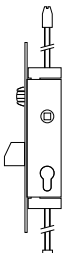
Floor strike:
ref. GUARPOHC

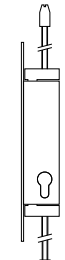


Reinforced locking points:
ref. PAB2230

2230	Cylinder	Backsets	Product code	CYL	STR.	ESC
		20	2230205NM	•	A	•
	TE-5	25	2230255NM	•	A	•
		30	2230305NM	•	A	•
		35	2230355NM	•	A	•
Cylinder not included	20		4230205NM	A	•	
	25		4230255NM	A	•	
	30		4230305NM	A	•	
		35		4230355NM	A	•

2231	Cylinder	Backsets	Product code	CYL	STR.	ESC
		20	2231205NM	•	A	•
	TE-5	25	2231255NM	•	A	•
		30	2231305NM	•	A	•
		35	2231355NM	•	A	•
Cylinder not included	20		4231205NM	A	•	
	25		4231255NM	A	•	
	30		4231305NM	A	•	
		35		4231355NM	A	•

2236	Cylinder	Backsets	Product code	CYL	STR.	ESC
		20	2236205NM	•	B	•
	TE-5	25	2236255NM	•	B	•
		30	2236305NM	•	B	•
		35	2236355NM	•	B	•
Cylinder not included	20		4236205NM	B	•	
	25		4236255NM	B	•	
	30		4236305NM	B	•	
		35		4236355NM	B	•

2237	Cylinder	Backsets	Product code	CYL	STR.	ESC
		20	2237205NM	•	•	•
	TE-5	25	2237255NM	•	•	•
		30	2237305NM	•	•	•
		35	2237355NM	•	•	•
Cylinder not included	20		4237205NM	•	•	•
	25		4237255NM	•	•	•
	30		4237305NM	•	•	•
		35		4237355NM	•	•

CYL: cylinder TE5 50303030N // STR.: stainless steel strikes.

A = 1 unit C2210INOX // B = 1 unit C2216INOX ESC: 1 unit E21000NE escutcheons