



Cilindros para muebles

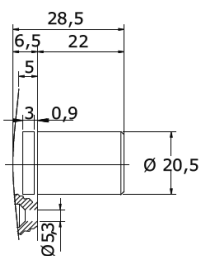
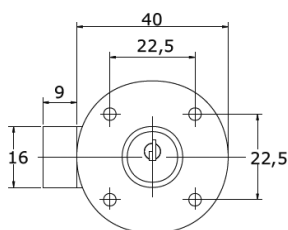
Furniture locks



ASSA ABLOY

613

613 embutir / 613 embed	Modelo / Model	Montaje / Assembly	Acabado / Finish	Código / Code
 	L20	Horizontal	Cromo / Chrome	86130HE01623
	L20	Vertical	Cromo / Chrome	86130VE01623



Aplicaciones: Cajones, armarios, puertas, etc que requieran uno o dos puntos de cierre.

Características:

- Cerradura de zamak.
- 5 plaquitas.
- Para espesores de hasta 21 mm.
- Amaestables hasta 204 unidades por maestra.
- Hasta 3.125 códigos distintos.
- Acabado en cromo.
- Incluyen 2 llaves dentadas de acero.
- Montaje en sentido horizontal o vertical.
- Unión oculta de varillas de cierre.



• Lote Mínimo: 25 Uds.

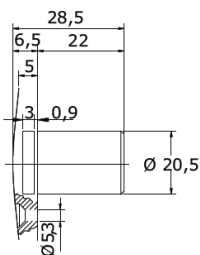
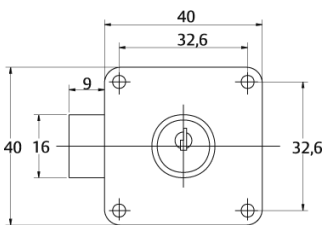
Applications: Drawers, cupboards, doors, etc., that require one or two locking points.

Characteristics:

- Zamak locks.
- 5 wafers.
- For thicknesses of up to 21 mm.
- Masterkeyable for up to 204 units per master.
- Up to 3.125 different codes.
- Chrome finish.
- 2 steel sawn keys included.
- Horizontal or vertical assembly.
- Concealed joint between locking rods.

• M.O.Q.: 25 pcs.

613 sobreponer / 613 overlay	Modelo / Model	Montaje / Assembly	Acabado / Finish	Código / Code
 	L20	Horizontal	Cromo / Chrome	86130HS01623
	L20	Vertical	Cromo / Chrome	86130VS01623



Aplicaciones: Cajones, armarios, puertas, etc que requieran uno o dos puntos de cierre.

Características:

- Cerradura de zamak.
- 5 plaquitas.
- Para espesores de hasta 21 mm.
- Amaestables hasta 204 unidades por maestra.
- Hasta 3.125 códigos distintos.
- Acabado en cromo.
- Incluyen 2 llaves dentadas de acero.
- Montaje en sentido horizontal o vertical.
- Unión oculta de varillas de cierre.

• Lote Mínimo: 25 Uds.

Applications: Drawers, cupboards, doors, etc., that require one or two locking points.

Characteristics:

- Zamak locks.
- 5 wafers.
- For thicknesses of up to 21 mm.
- Masterkeyable for up to 204 units per master.
- Up to 3.125 different codes.
- Chrome finish.
- 2 steel sawn keys included.
- Horizontal or vertical assembly.
- Concealed joint between locking rods.

• M.O.Q.: 25 pcs.