

# Accesorios

## Accessories



ASSA ABLOY



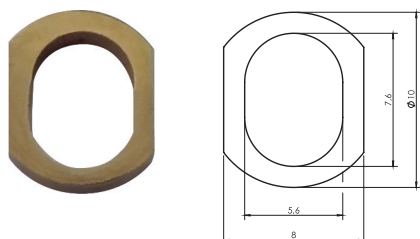
# Accesorios

## Accessories

| Escudos o casquillos / Spacers - rings |      | Ext. | Int. | Espesor / Thickness | Acabado / Finish | Código / Code |
|--|------|------|------|---------------------|------------------|---------------|
| <b>Cónico / Conic</b>                  |      |      |      |                     |                  |               |
|  | 24,5 | 19   | 1,5  | Níquel / Nickel     | 842079000010E    |               |
|  | 25   | 20   | 3    | Níquel / Nickel     | 840579E00112E    |               |
|  | 26   | 19   | 5    | Níquel / Nickel     | 842079260002E    |               |
|  | 23,5 | 19   | 5,3  | Níquel / Nickel     | 842179000010E    |               |
|  | 35   | 19   | 7    | Níquel / Nickel     | 840579350002     |               |
|  | 23,5 | 19   | 9,8  | Níquel / Nickel     | 849779000020E    |               |

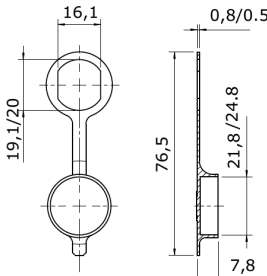
| Escudos o casquillos / Spacers - rings |    | Ext. | Int. | Espesor / Thickness | Acabado / Finish | Código / Code |
|--|----|------|------|---------------------|------------------|---------------|
| <b>Recto / Straight</b>                |    |      |      |                     |                  |               |
|  | 22 | 19   | 1,5  | Níquel / Nickel     | 842021BM013      |               |
|  | 22 | 19   | 2,2  | Níquel / Nickel     | 842321000022E    |               |
|  | 22 | 19   | 3,5  | Níquel / Nickel     | 842621000027E    |               |
|  | 22 | 19   | 4,5  | Níquel / Nickel     | 842421000022     |               |

| Adaptador para cerrojos M7 > M10 / Adaptor for cams M7 > M10 |  | Código / Code | Unidades / Units |
|--|--|---------------|------------------|
|  |  | 840021M70010E | 25               |



# Accesorios

## Accessories

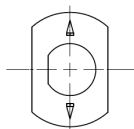
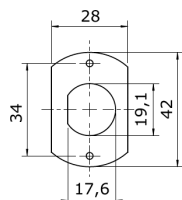
| Tapones de estanqueidad / Watertightness caps                                     | Modelo / Model  | Aplicación / Application                    | Código / Code |
|---|-----------------|---|---------------|
|  | Grande / Large  | Cerraduras cabeza D25 / Locks with head D25 | 841071G00000E |
|   | Pequeño / Small | Cerraduras cabeza D22 / Locks with head D22 | 840571D22000E |



| Chapa fijación / Fixing plates   | Modelo / Model   | Código / Code |
|--|------------------|---------------|
|  | Picos / Peaks    | 840524B00002  |
|  | Taladros / Holes | 840524A00002  |

Taladros / Holes

Picos / Peaks



| Guardapolvos frontal / Antidust cover   | Código / Code |
|---|---------------|
|  | 8525100       |

### Aplicaciones:

Uso para evitar entrada de polvo, agua, etc. en el cilindro.

Aplicable en cilindros descentrados de gamas estándar 605 y seguridad Mini.


### Applications:

Use to avoid dust, water, ... inside the cylinder.


Only suitable for offset cylinders of standard 605 and security Mini ranges.

# Accesorios

## Accessories

| Tuercas y arandelas   Nuts and washers  | Modelo   Model    |       | Código   Code |
|---|-------------------|-------|---------------|
|  | Tuerca   Nut      | M7x1  | 842076M70100E |
|   | Tuerca   Nut      | M8x1  | 84077600011EE |
|   | Tuerca   Nut      | M10x1 | 843276M1001EE |
|   | Tuerca   Nut      | M16x1 | 841076M1601EE |
|   | Tuerca   Nut      | M19x1 | 841076M1901EE |
|   | Tuerca   Nut      | M21x1 | 842476M2101E  |
|   | Arandela   Washer | M10   | 840506000102E |

• Lote: 100 unidades. • Batch: 100 pieces.

| Spray lubricante TESA (12 botes)   TESA lubricant spray (12 units)                  | Código   Code  |
|---|--|
|  | <p style="text-align: center;"><b>SPRAYTESA</b></p> <p>Con el fin de evitar fallos y garantizar una larga vida a sus cerraduras, recomendamos utilizar regularmente spray lubricante TESA.</p> <p><i>In order to avoid disfunctions and guarantee your locks a long-lasting life, we recommend to use regularly a lubricating spray.</i></p> |