



## URBAN Series Handles

Inspiring state-of-the-art designs



**ASSA ABLOY**

Experience a safer  
and more open world

## The reflection of perfection

The URBAN series is a collection of high durability handles that stands out for a design line that emphasizes simplicity in the forms.

It is a range available in zamak or brass, materials traditionally used in the manufacture of fittings, which offer great durability and resistance to corrosion. In other words, these are quality components that ensure greater durability for our handles and allow a high intensity use.

The design, with straight and clean lines, offers a contemporary style that creates unique atmospheres in any room or space.



## A complete range and four finishes

The URBAN series is made up of **several different models** in a round or square rose with a thickness of 5 mm and with **4 high-quality finishes** available depending on the model: Bright Chrome, Satin Chrome, Polished Brass and Black.

The exclusive 5-year guarantee, both for operation and resistance to corrosion in the entire range, is proof of the confidence we place in this product.

### Finishes



Bright Chrome  
(CR)



Satin Chrome  
(CS)



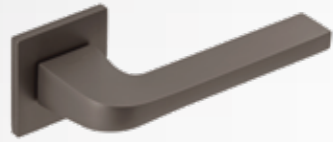
Polished Brass  
(LP)



Black  
(NE)



*\* Check the availability of the finish depending on the model*



**Islandia**  
MIS5RC800

Finish



**River**  
MRI5RC800

Finish



**Radius**  
MRA5RC800

Finish



**Flat**  
MFL5R800

Finish



**Sand**  
MSA5RC800

Finish



# URBAN Series



**Plane**  
MPL5R800

Finish



**Majal**  
MMJ5RC800

Finish



**Iceberg**  
MIC5R800

Finish



## Technical specifications

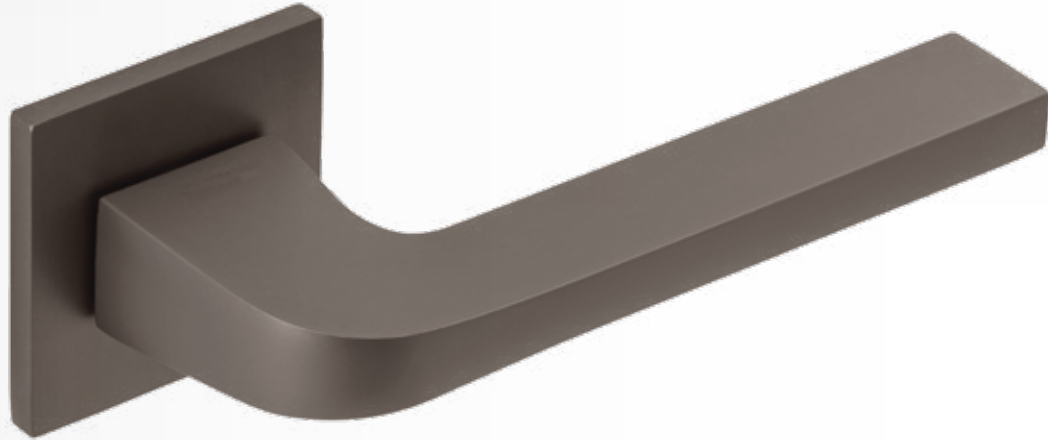
- Handles tested according to EN1906:2015
- Category of use: GRADE 2
- Exceeds 200,000 opening cycles, GRADE 7
- GRADE 4 resistance to oxidation (240 hours salt spray) according to EN1670:2007.
- Maximum door thickness 50 mm. Contact us in case of thicker doors.
- Compatible with locks with positioning of DIN through bolts (38 mm between fixing screw holes).



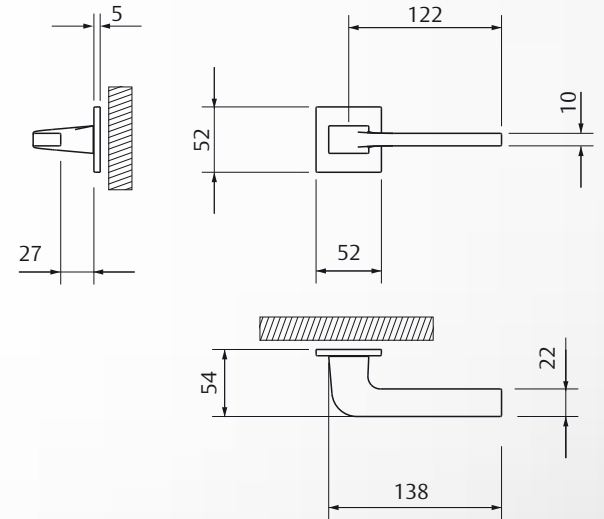
# URBAN Series

**Islandia**

MIS5RC800



Finishes



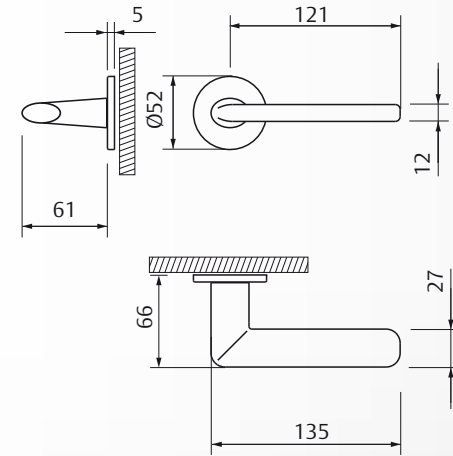
# URBAN Series

**Flat**

MFL5R800



Finishes



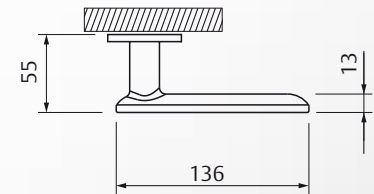
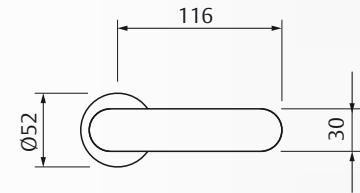
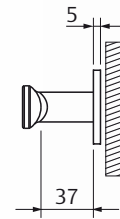
# URBAN Series

**Plane**

MPL5R800



Finishes





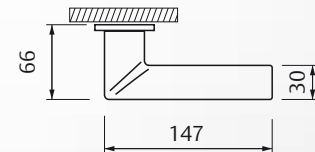
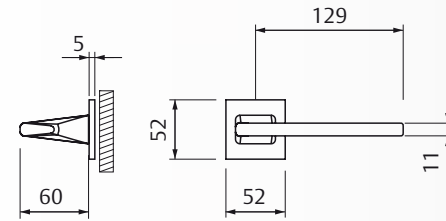
# URBAN Series

**River**

MRI5RC800



Finishes

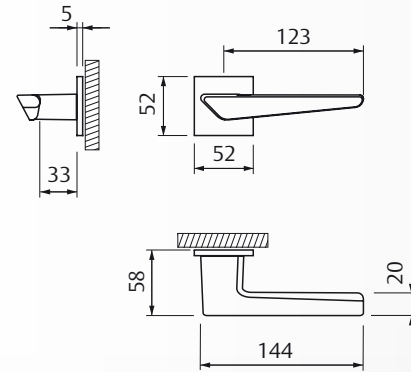


# URBAN Series

**Sand**  
MSA5RC800

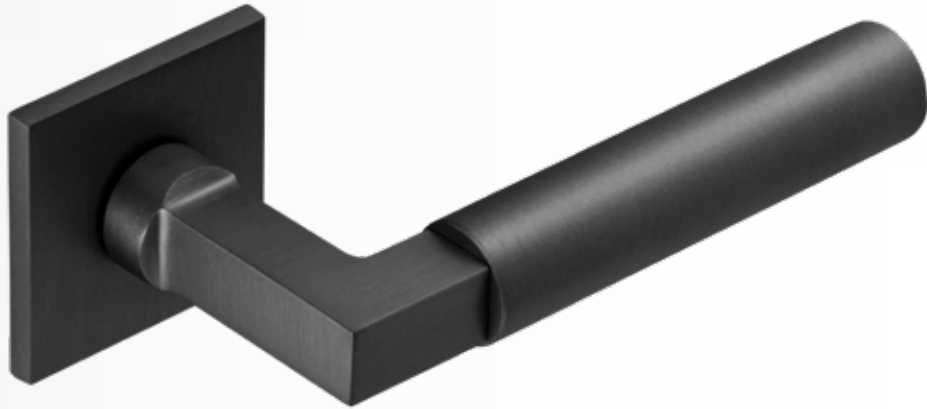


Finishes

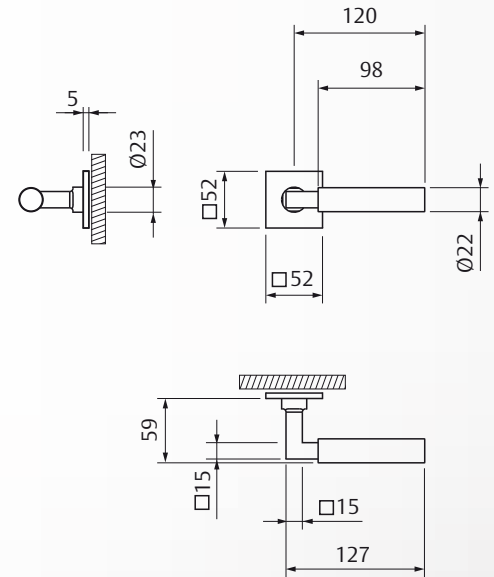


# URBAN Series

**Majal**  
MMJ5RC800



Finishes

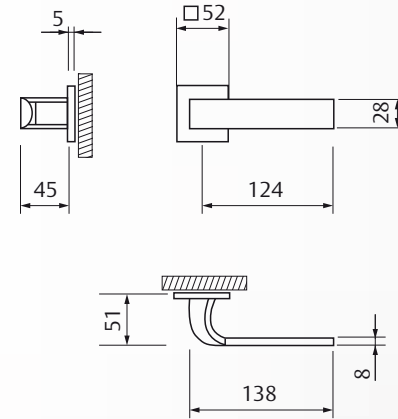


# URBAN Series

**Radius**  
MRA5RC800



Finishes

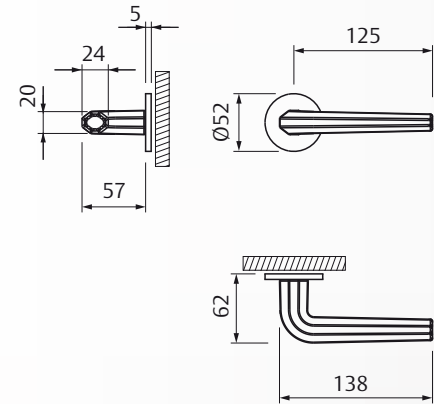


# URBAN Series

**Iceberg**  
MIC5R800



Finishes



# Accessories

Technical drawing of Keyhole C handle showing dimensions: 052 (width), 5 (height), 17.4 (keyhole width), 33.4 (keyhole height), 10.4 (base width).

**Keyhole C**  
MPB0M5SC

Finish

CR CS LP NE

Technical drawing of Keyhole R handle showing dimensions: 052 (width), 5 (height), 17.4 (keyhole width), 33.4 (keyhole height), 10.4 (base width).

**Keyhole R**  
MPB0M5S

Finish

CR CS LP NE

**Thumbturn C**  
MPPEM5SC

Finish

CR CS LP NE

**Thumbturn R**  
MPPEM5S

Finish

CR CS LP NE

Technical drawing of Round flush handle showing dimensions: 3 (height), 051 (width), 028 (hole diameter), 11.5 (base height).

**Round flush handle**  
TIROUCUCU

Finish

IS NE

Technical drawing of Square flush handle showing dimensions: 14 (height), 2 (height), 25 (width), 50 (width), 50 (width).

**Square flush handle**  
TIROUCU

Finish

IS

**Round floor stop**  
(Ø20) TOPER

Finish

CR CS LP NE

**Square floor stop**  
(25) TOPEC

Finish

CR CS NE

Technical drawing of Kubika single handle showing dimensions: 65 (width), 200 (height).

**Kubika single handle (200x20)**  
TSKU200

Finish

IS

Technical drawing of Kubika double handle showing dimensions: 200 (height).

**Kubika double handle (200x20)**  
TDKU200

Finish

IS

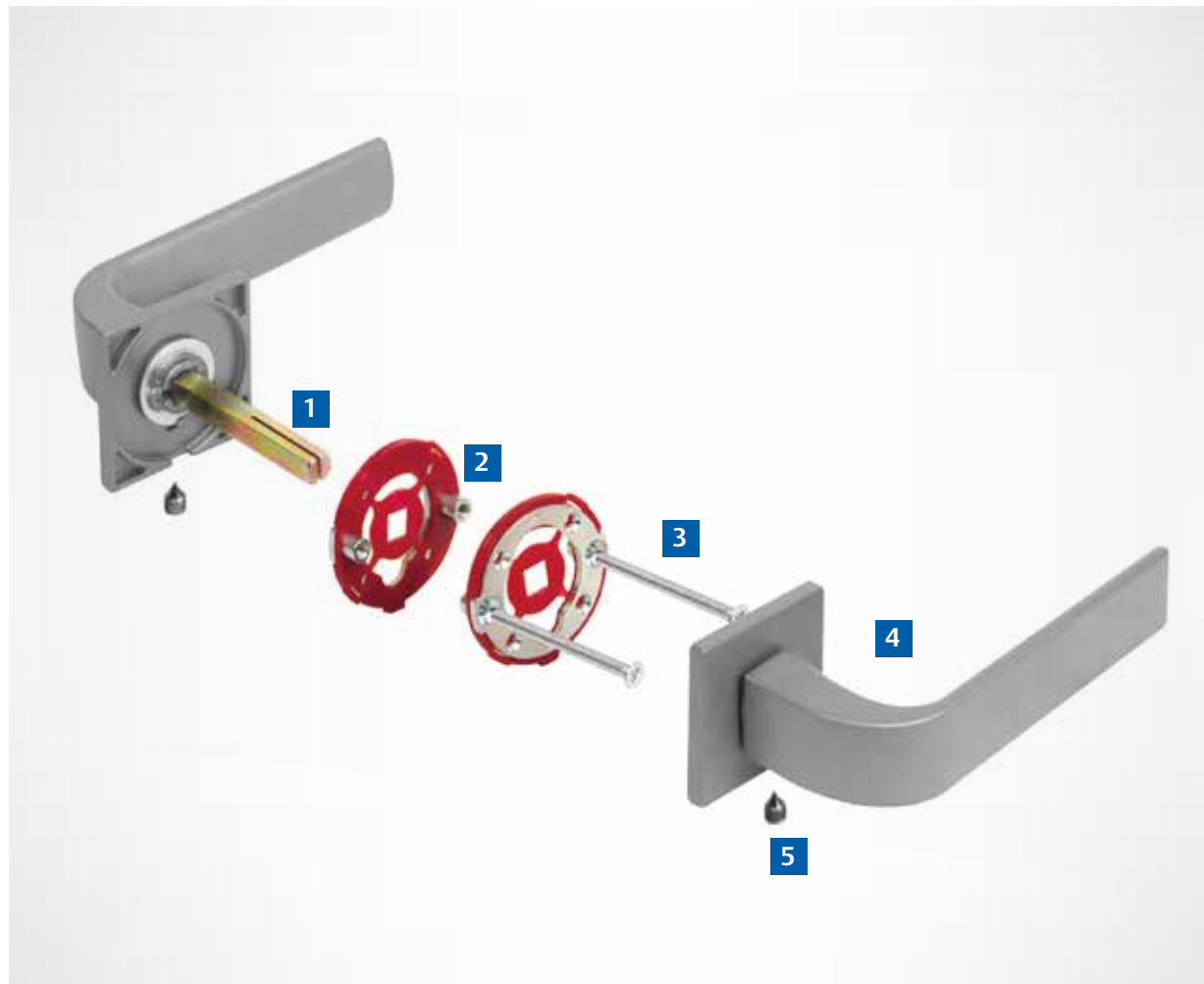
# Assembly instructions

- 1.- Fit the 8 mm spindle in the lock, **1**  
(with the slot pointing downwards) (**Figure 1**)
- 2.- Fit the plastic fixing plates **2** on the door with the through bolts.**3**
- 3.- Fit the handle **4** and by turning it, break and remove the central plastic piece. (**Figure 2**)
- 4.- Fit the rose to the fixing plate, pushing from bottom to top until it clicks.
- 5.- Fit the handle and press the lower **5** stud firmly against the spindle.

Figure1



Figure2







## TESA ASSA ABLOY

(a registered trademark of TALLERES DE ESCORIAZA, S.A.U.) is the global leader in the development, supply and service of electronic access control systems, giving real added value to buildings and projects in the hotel and hospitality and health-residential sectors.

TESA ASSA ABLOY is the only company that offers a specific Comprehensive Access Plan, since it combines systems with RFID proximity technology, magnetic stripe and electronic cylinders for each of the required accesses in the same project. It offers both the most advanced and the most effective level of intelligence in access control in the world, with total security and a revolutionary aesthetic. It is the only manufacturer that provides a dual system (proximity and magnetic stripe in one), with the benefits in both cost and efficiency so highly valued by the customer.

Solutions that complement one of the widest ranges of wall readers, energy savers, panic bars, safes, and other accessories. TESA ASSA ABLOY provides a comprehensive solution for hotel and residential healthcare complexes (hospitals, homes for the elderly, nursing homes, etc.), through innovation, technology and state-of-the-art design.

## TESA ASSA ABLOY

Talleres de Escoriaza, S.A.U.  
Barrio Ventas, 35  
E-20305 Irun · Guipúzcoa

Tel.: +34 943 669 100

Fax: +34 943 633 221

[www.tesa.es](http://www.tesa.es)



**ASSA ABLOY**

Experience a safer  
and more open world