

ABLOY® ME152

ANSI Tubular deadbolt double cylinder CY411, tubular deadbolt lock case LC802



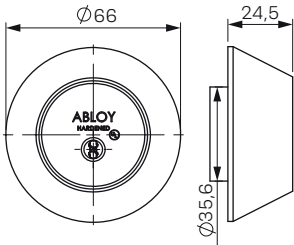
Product description

Bolt operated by key outside and inside.

Overview of Advantages

- Can be use with ANSI range applications
- Suitable for both outer and inner door use
- UL listed products
- Case hardened steel cylinder housing
- High Security H2X bolt
- - hardened steel
- - Full 2" bolt will withstand 2 tons force
- 1/4" (6mm) hardened steel retaining screws
- Reinforced steel strike box
- Protective bolt shield
- Several plating options

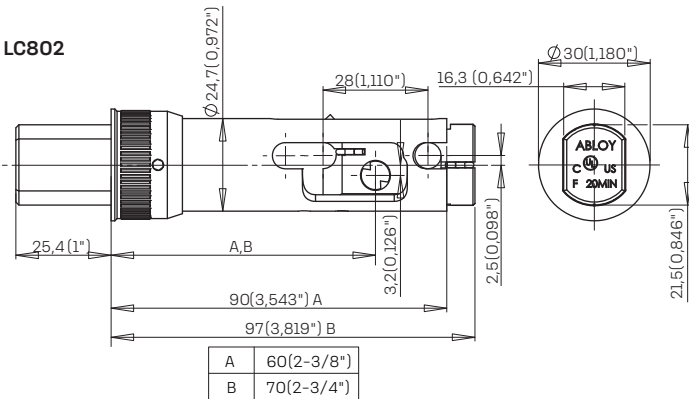
CY411



Technical data

Available key systems	ABLOY PROTEC, ABLOY PROTEC ² , ABLOY NOVEL
Available plating options	Bright chrome (Cr), Brushed chrome (CrHa)
Cylinder length	24,5 mm
Length adjustable	60 mm or 70 mm
Suitable for fire doors	Yes
UL listed product	Yes
Weight	1,09 kg

LC802



This content is protected by Intellectual Property Rights Laws. The title to the content shall not pass to you, and instead shall remain with Abloy Oy or a third party holding the title. Abloy develops continuously the products and solutions offered. Therefore, the information contained in the document is subject to change without notice. ABLOY PROVIDES THIS CONTENT ON AN "AS IS" BASIS WITHOUT ANY WARRANTIES OF ANY KIND, EXPRESS, IMPLIED, OR STATUTORY."

