

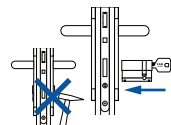
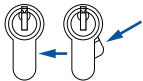


FAB[®]
ASSA ABLOY



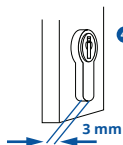
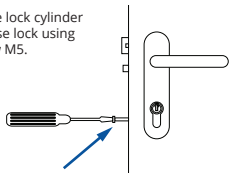
Lock cylinder installation

1. Insert the appropriate key into the lock cylinder until it stops, and turn it so that the cam is hidden inside the cylinder.



2. Insert the lock cylinder into the mortise lock and the door fitting (gently, without forcing it).

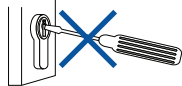
3. Secure the lock cylinder in a mortise lock using side screw M5.



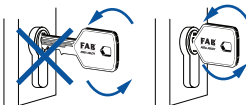
4. For safety reasons, the cylinder must not jut out of the mounting plate by more than 3 mm.

Use

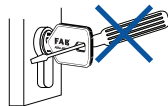
1. Always use the appropriate key. Never insert any items into the lock cylinder keyhole other than the appropriate keys.



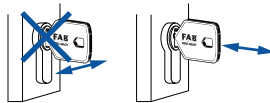
2. Insert the key all the way into the keyhole. Don't turn the key until it is fully inserted, as you may damage it.



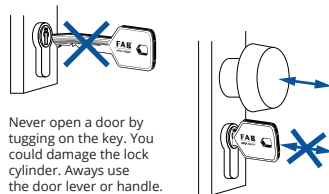
3. Do not use anything other than your fingers to help you turn the key. It must be possible to turn the key freely using your hand.



4. Always insert or remove the key perpendicular to the lock cylinder. Never apply any lateral force to the key.

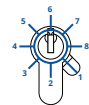


5. Avoid using damaged or bent keys.

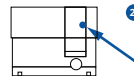


6. Never open a door by tugging on the key. You could damage the lock cylinder. Always use the door lever or handle.

One-sided cylinder cam adjustment



1. On a one-sided lock cylinder, the adjustable cam can have eight settings spaced 45° apart.



2. To set the cam position, press the setting button and turn the cam to the desired position.

Maintenance

1. Apply the recommended lubricant to the lock cylinder at least once every 6 months.



2. Do not use oil or graphite lubricant.

ASSA ABLOY
Opening Solutions CZ s.r.o.
Strojnická 633
516 01 Rychnov nad Kněžnou
Tel: +420 494 511 111
email: info@assaabloy.cz

1. Always use original FAB keys. The use of non-original keys in FAB lock cylinders will void the manufacturer's warranty.

